



WHAKARATONGA IWI

FIRE
EMERGENCY

NEW ZEALAND

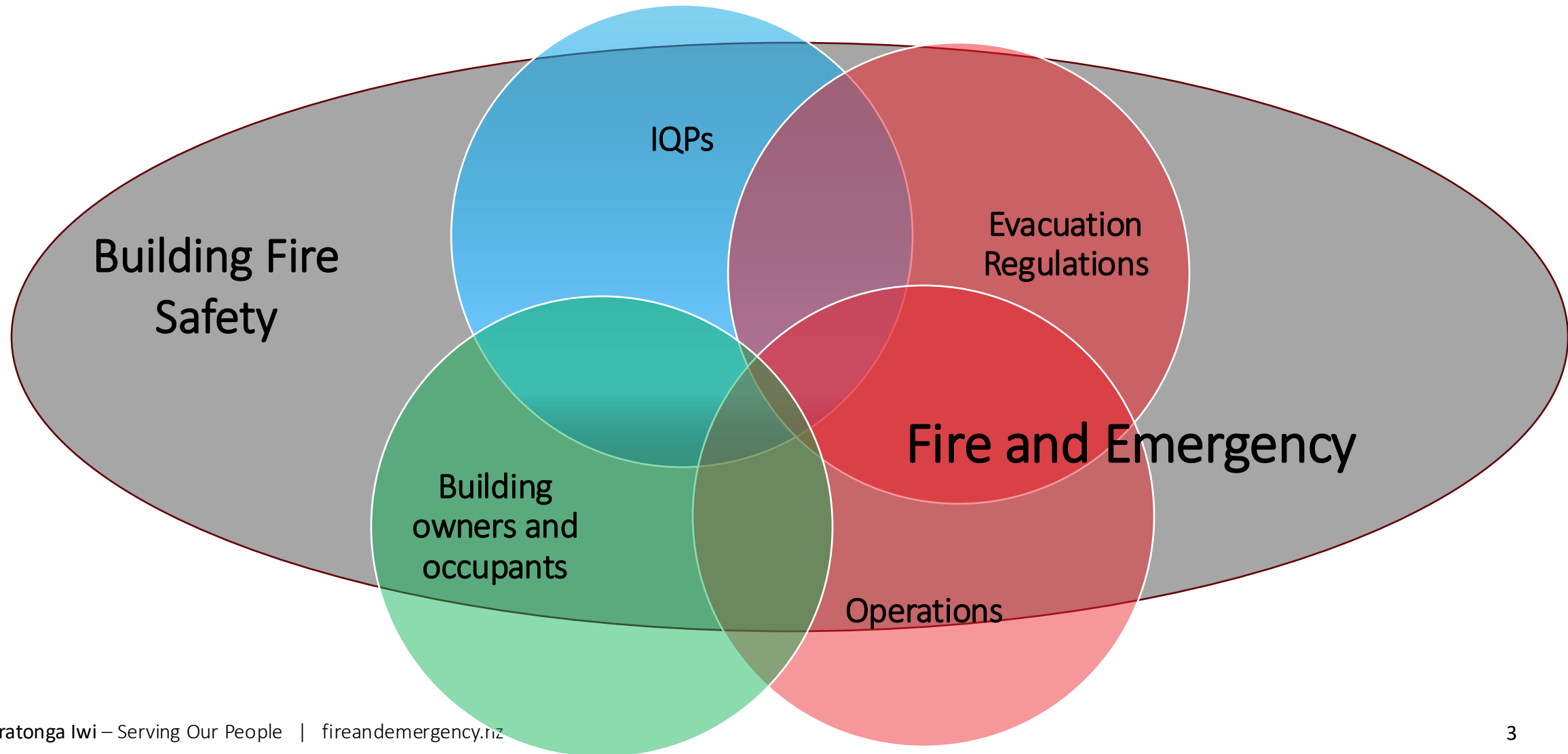
A FENZ Perspective on Emerging Evacuation Issues: What do IQPs need to know?

The Big Picture

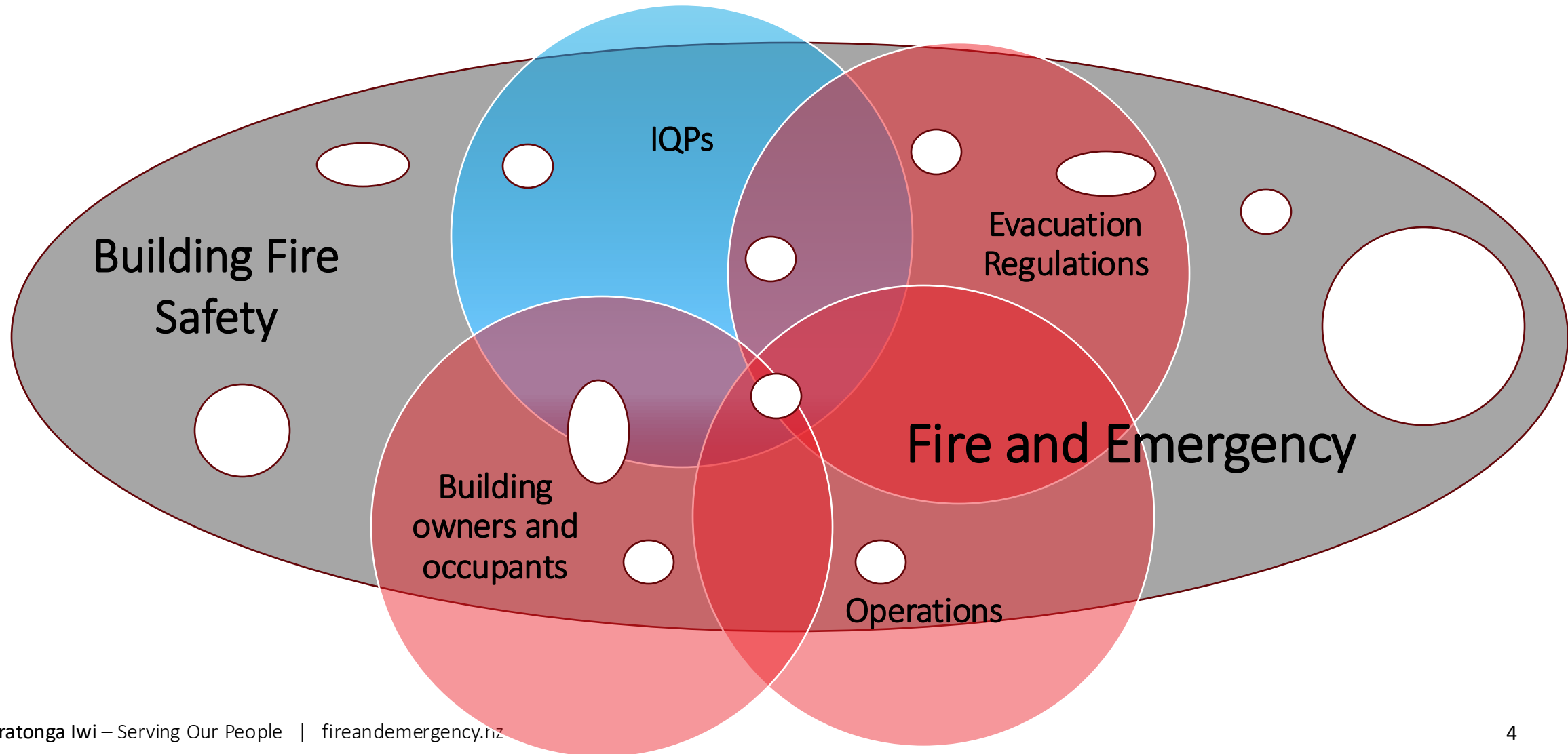


Building Fire
Safety

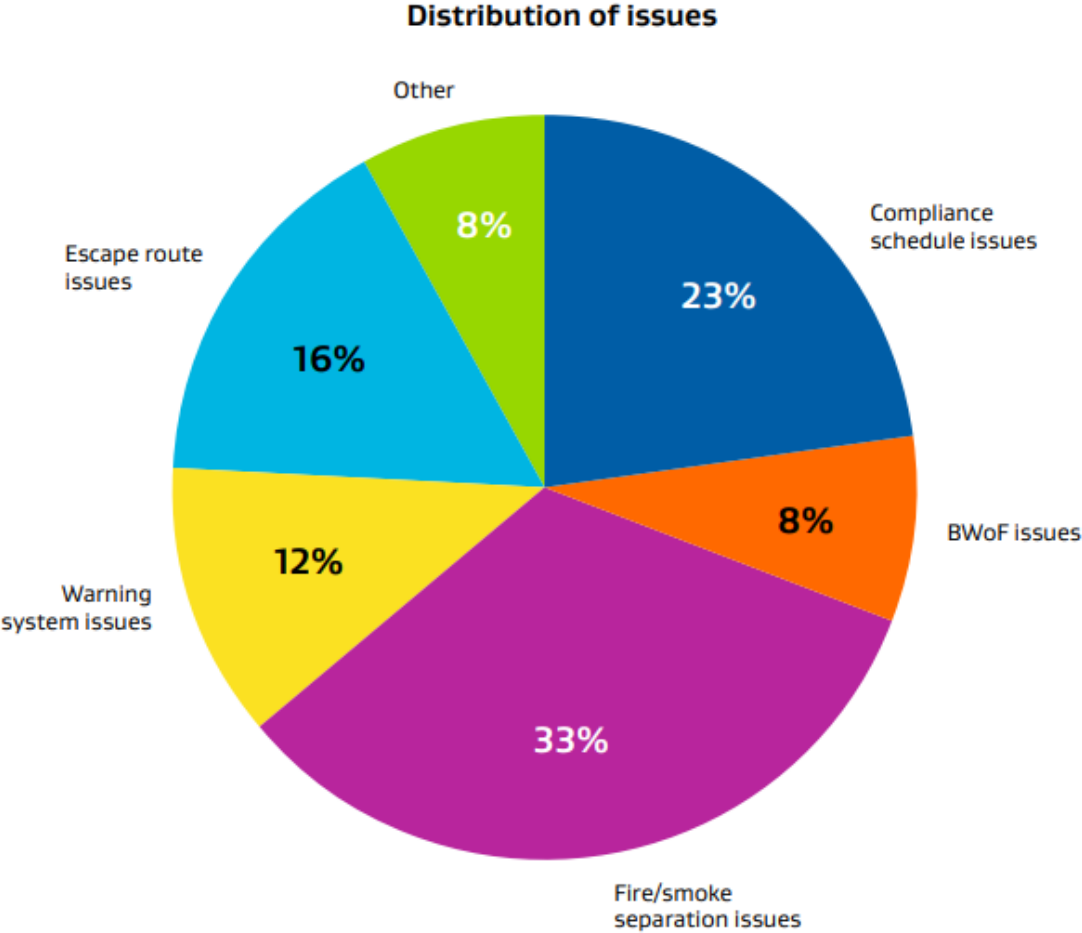
FENZ, IQPs and building owners/occupants



The Big Picture – Where are the gaps?

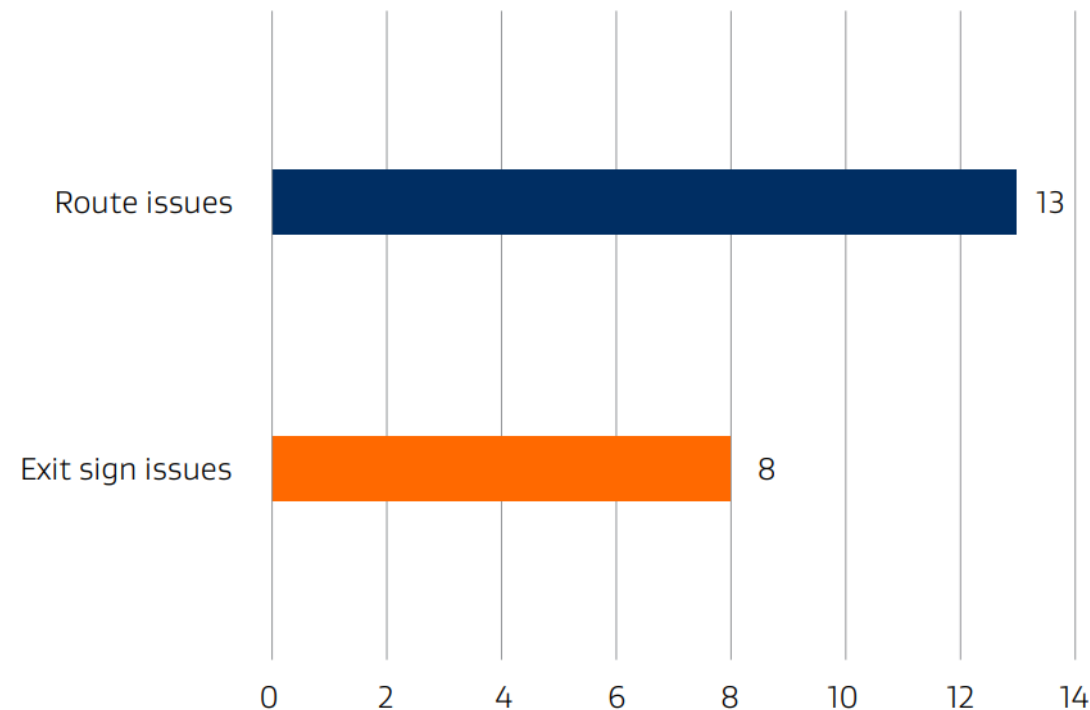
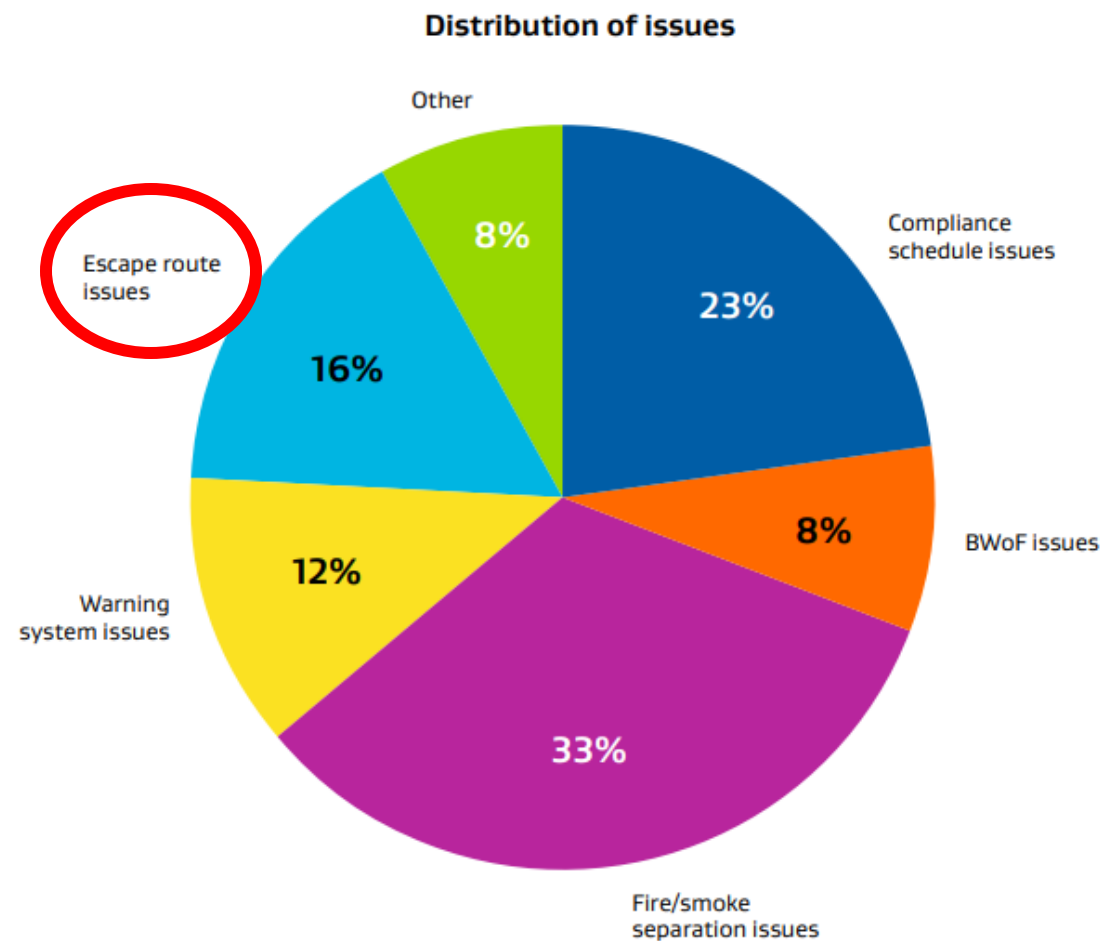


Evacuation regulations and Specified System 15



Operation Magazine Report into the Joint Operation – Boarding House Fire Safety and Landlord Compliance

Evacuation regulations and Specified System 15



Operation Magazine Report into the Joint Operation – Boarding House Fire Safety and Landlord Compliance

Everyone is out of the building – what's next?



CC BY 3.0 Biswarup Ganguly



Equitable egress



Refuge action

In the event of a fire:
This refuge affords fire and smoke protection for approximately [] minutes.
The evacuation plan in operation within these premises ensures that assistance will arrive at this point within [] minutes.



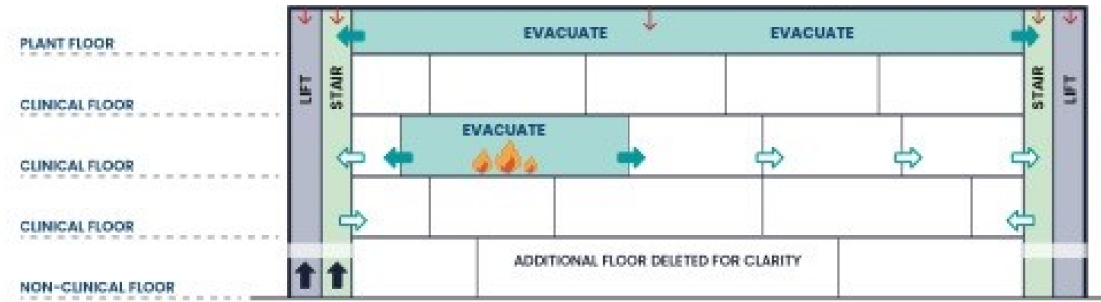
Disabled persons should:

1. Remain calm.
2. Wait here until assistance arrives.

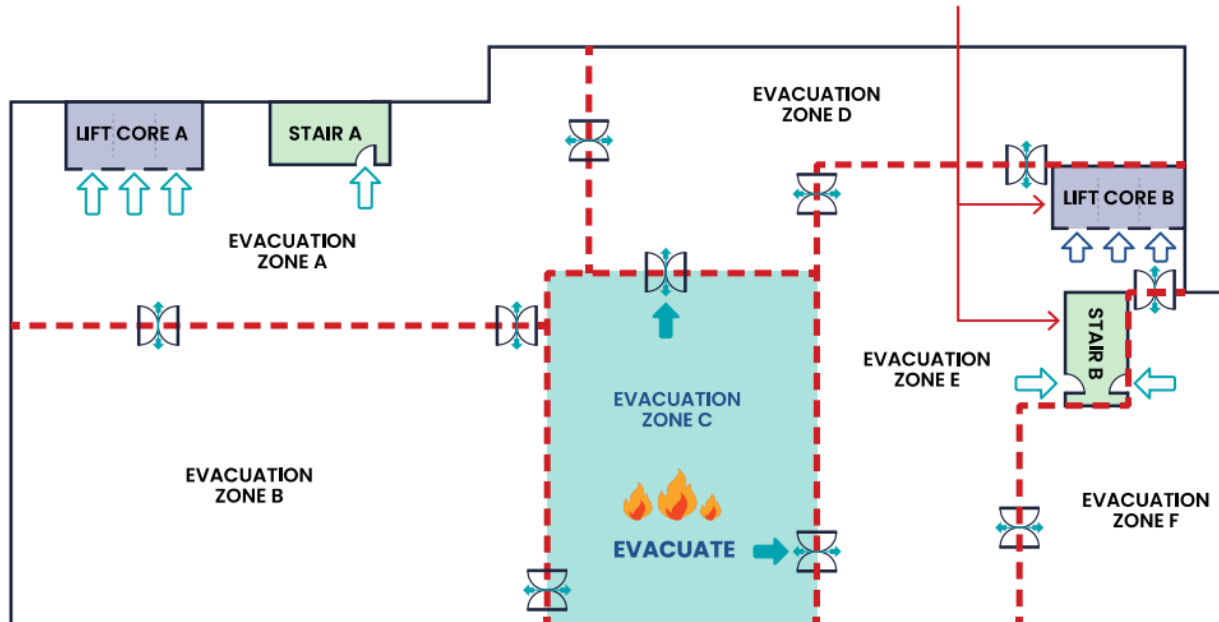
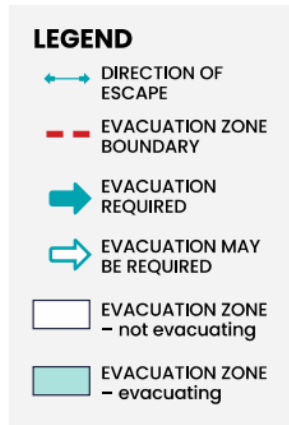


1. Do not attempt to leave the building unassisted.
2. Do not leave this point even temporarily.

Internal places of safety – mass timber



Stair(s) and Lift Core(s) in close proximity to the Evacuation Zone on fire expected to be prioritised for fire-fighting operations.



Figures: Te Whatu Ora Fire Engineering Design for Hospitals Design Guidance

Video: BRANZ

Fire bolts



FireTS Lab



WHAKARATONGA IWI

FIRE
EMERGENCY

NEW ZEALAND

Questions?

fireandemergency.nz

