

Health New Zealand Compliance Programme Passive Fire



History:

The Beginning:

- Post Earthquake works.
- IQP identified passive fire non compliances.
- CDHB /Council agreement on remediation timeline 5 Years in 2013.
- Initials Budget of \$100,000.
- I Joined CDHB in 2015

Knowledge:

**We all know how they
work don't we?**

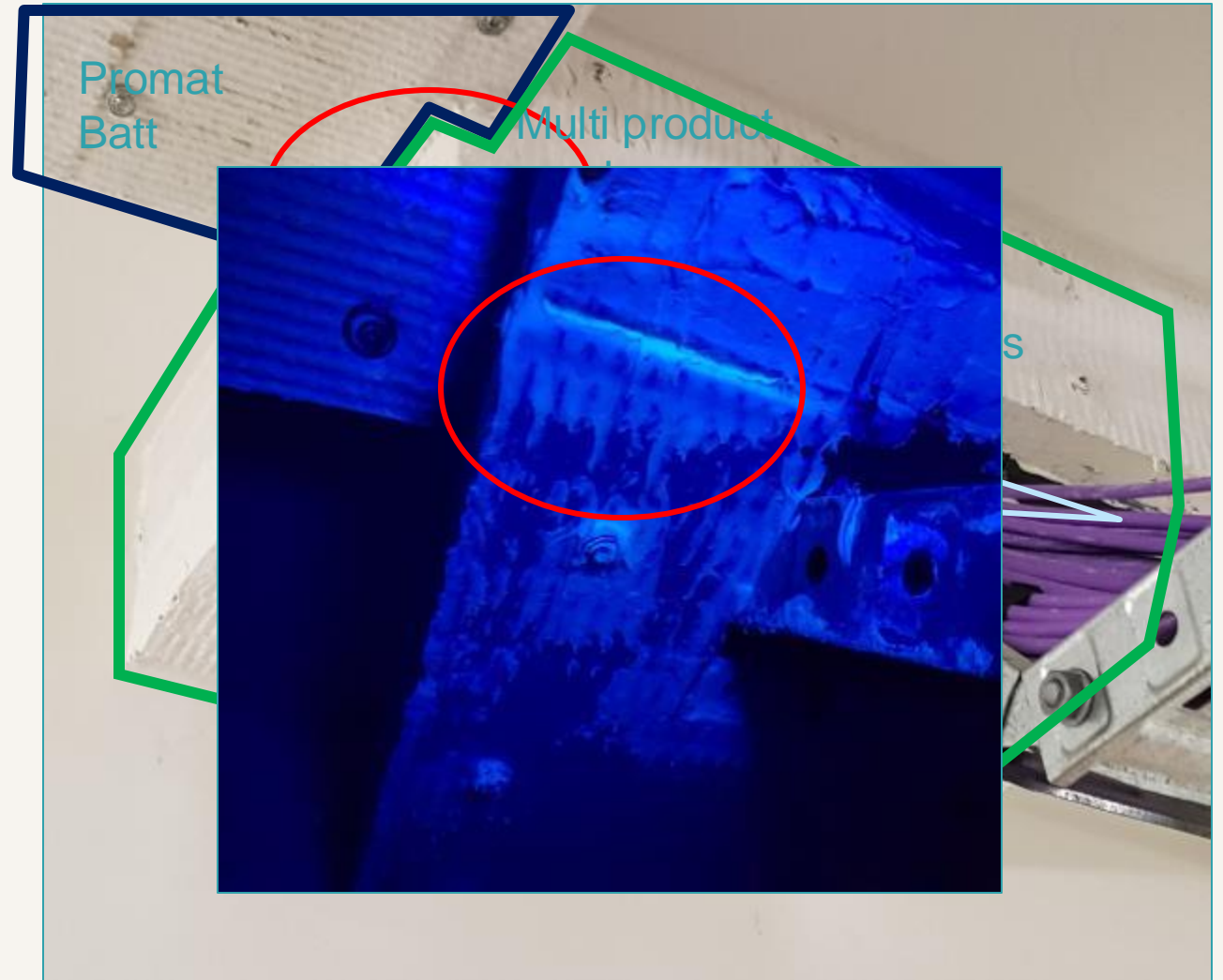


Solutions ?

This install has:

- PS 1 – Design
- PS 2 – Peer Review
- PS 3 – Installer confirmation
- PS 4 – Engineers Approval
- CoC – BCA Approval
- BWOF – Current

Looks compliant to me:



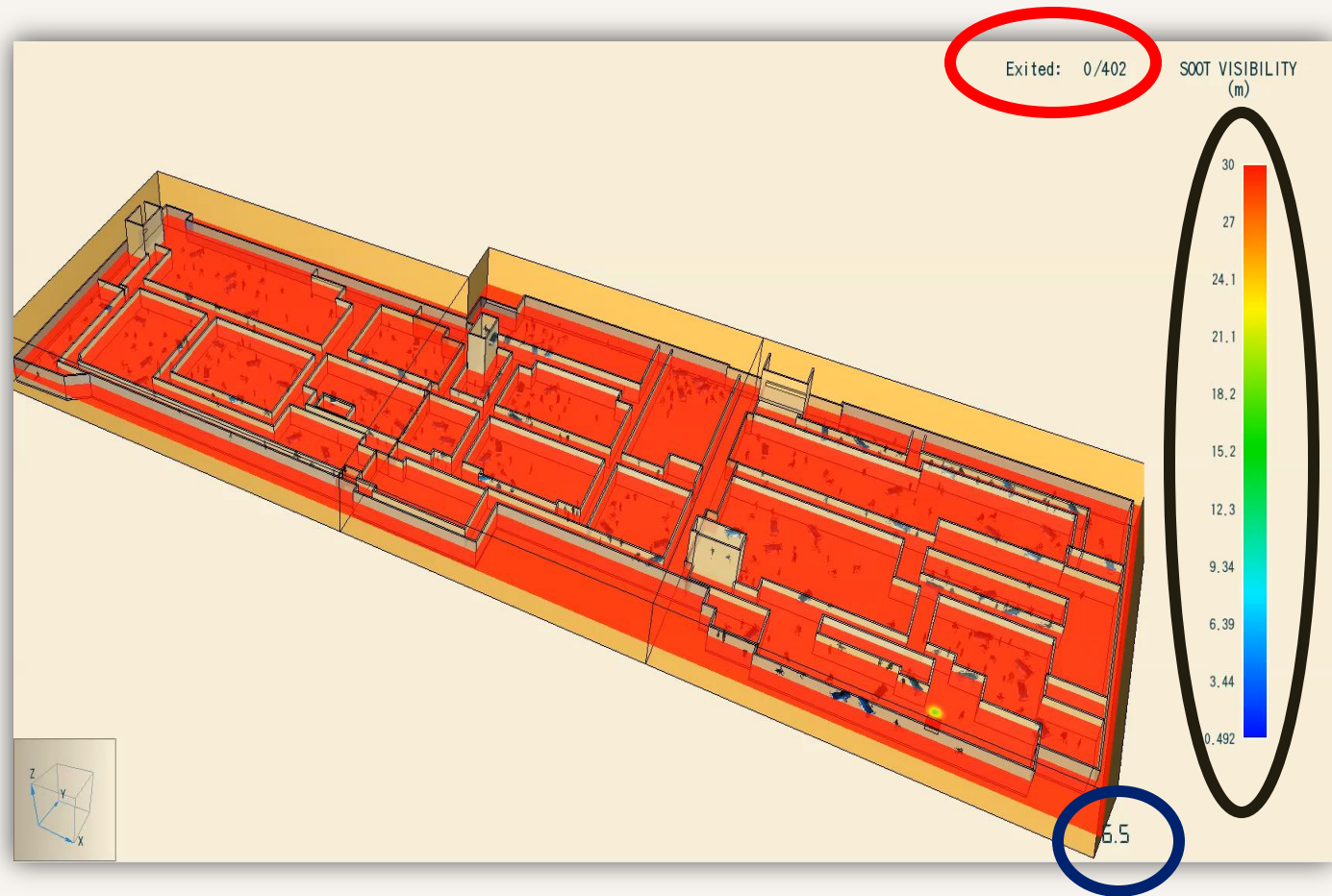
3 Step Programme:

Step 1– Searching for answers:

- Identified over 50,000 defects.
- Estimated Budget forecast \$200 m.
- Estimated Programme 10 Years.
- We didn't look at Mechanical / HVAC.
- We “Believed” Fire Doors were OK.
- We established the industry was like the “Wild West”.

3 Step Programme:

Step 2 – Funding:



3 Step Programme Our Original “Stop the Rot”

Step 3 – Establish the basics:

Governance

Design

Materials

Installation

Policy and Process Governance:

The backbone:

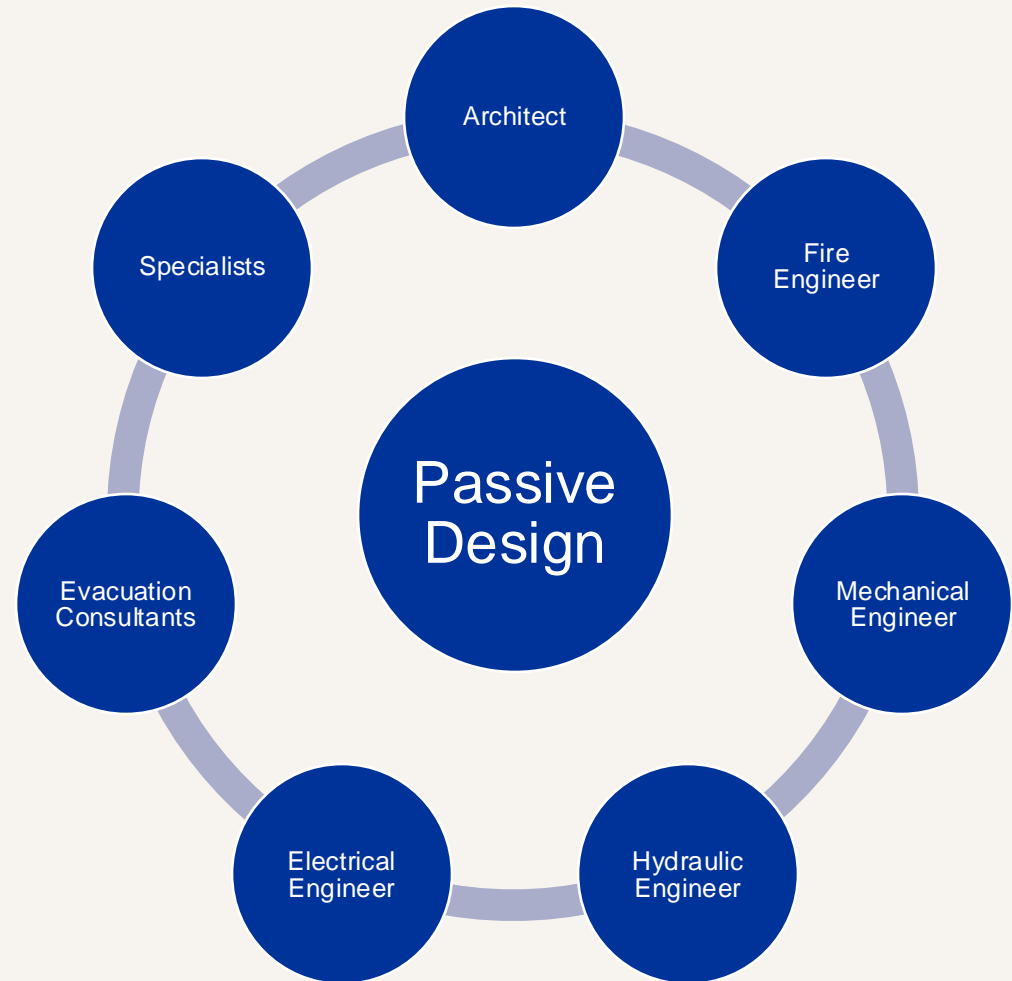
Develop
a Design
Guide

Write a
New
Policy

Define
the
Process

Designers:

Who's responsible?



Materials:

Control the Flow:

[illegible]

Install Time

Installation: Part 1

Training with the Manufacturer:



Installation: part 2

Accreditation Scheme:



Training

- Off Site
- Zero Risk
- No Cost



Level 1

- Small works
- 100% monitored



Level 2

- Mid range Projects
- Reduced Monitoring



Level 3

- Complex or High Value Projects
- Variable Monitoring



Installation: part 3

Installation and QA:

- All stake holders agreed that QA and Records within the industry were non-existent.
- All agreed we needed a system that covered cradle to grave.
- Extensive review of systems available around the world, we found:



- More on this later.



Getting Traction:

Process:

- Stake Holders.
 - Who we are accountable to.
- Approach and Engineering.
 - NFPA 101A,
 - Quality Assurance,
 - Compliance,
- Planning and Programming.
 - Plan of Attack,
 - Easy Wins,
 - Co-ordination,

Our Stake Holders:

Health New Zealand
Te Whatu Ora

Christchurch
City Council

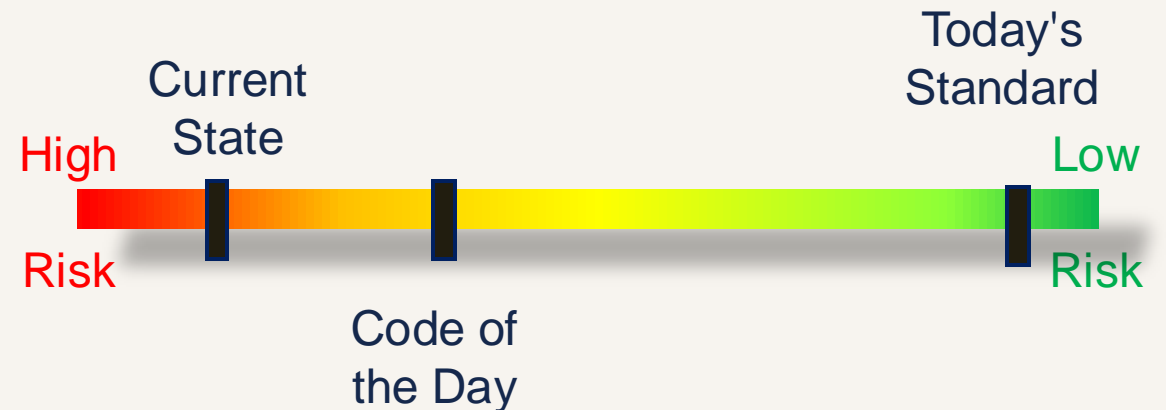
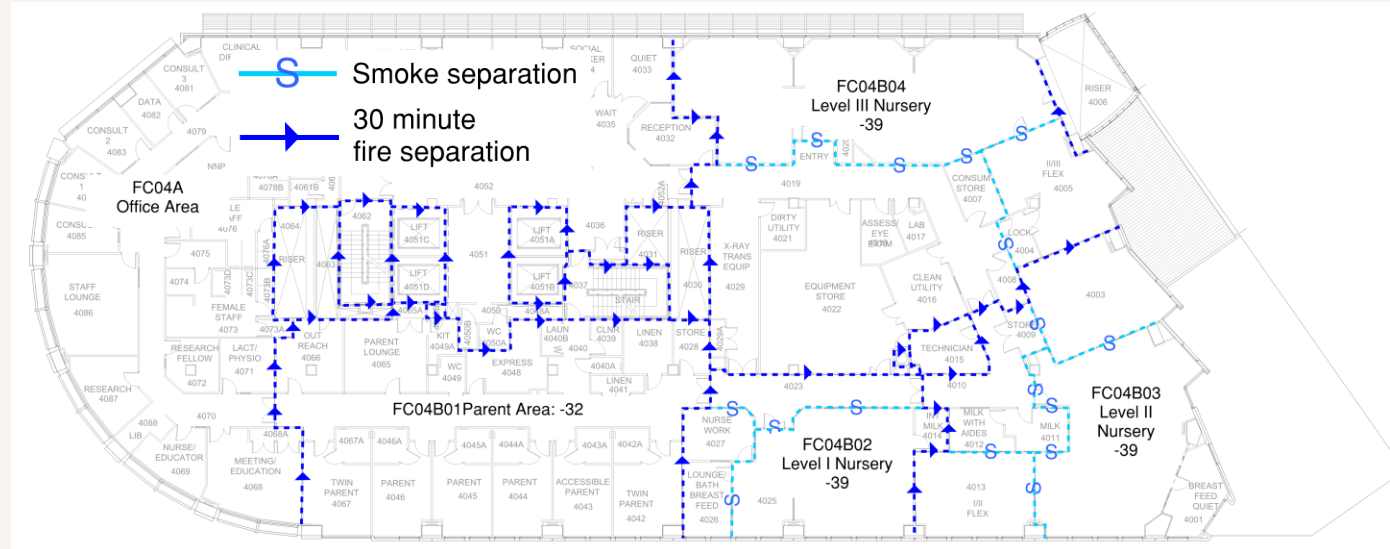


 Marsh

SGS

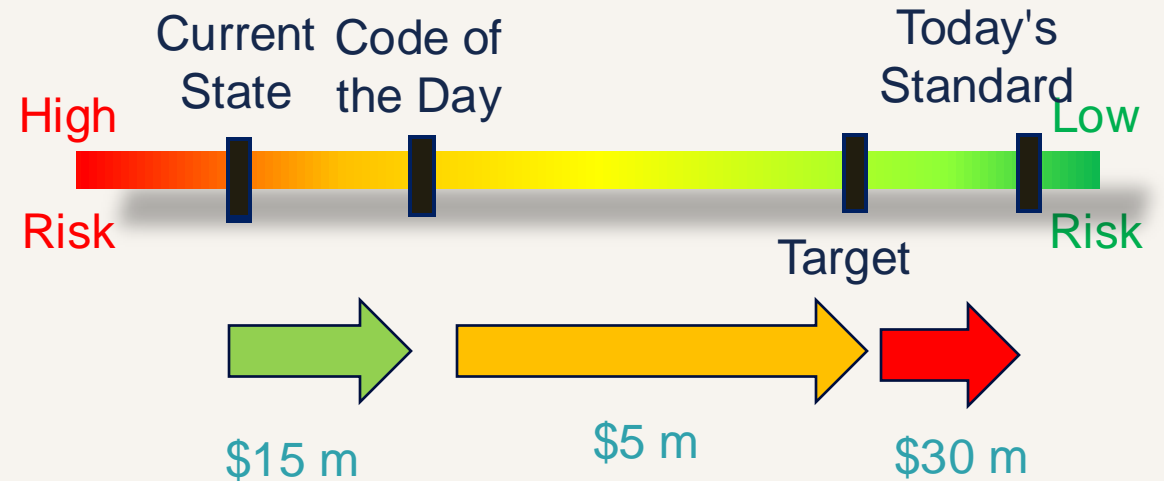
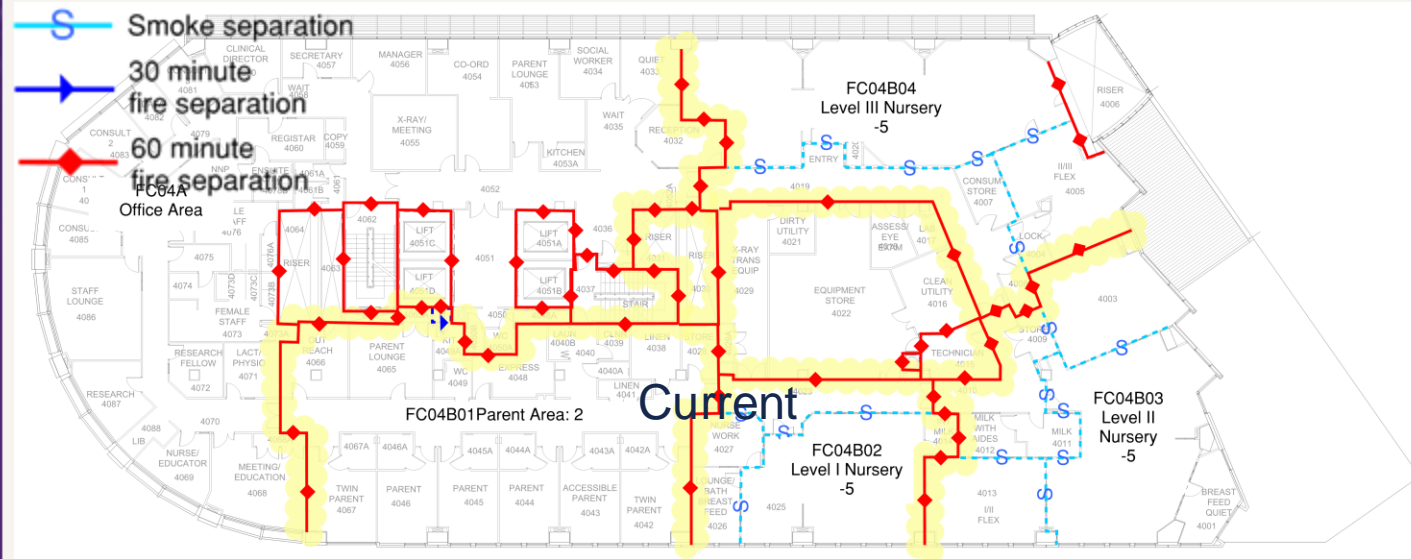
The Approach:

NFPA 101A Risk Based Engineering:



The Approach:

NFPA 101A: The balancing act





Design Guide, Reviews, Consenting.

New to New Zealand:

- Refined NFPA 101A to meet NZ Building Code.
- Universal Design Guide covering every option.
- Complete extensive Peer Reviews of Engineering and Design with equal input from all.
- Consent application based on Theory only.

Where to Start:

- Parkside Blocks A and B
- Parkside Blocks C and D
- Christchurch Women's
- Oncology and Food Services
- Clinical services Building
- Riverside

Planning:



Easy Wins:

- Covid Response Wards - CoA
- Opening of Waipapa and relocation of Wards and ED
- Green light Parkside Building
- Parkside Medical Progressive Care Ward

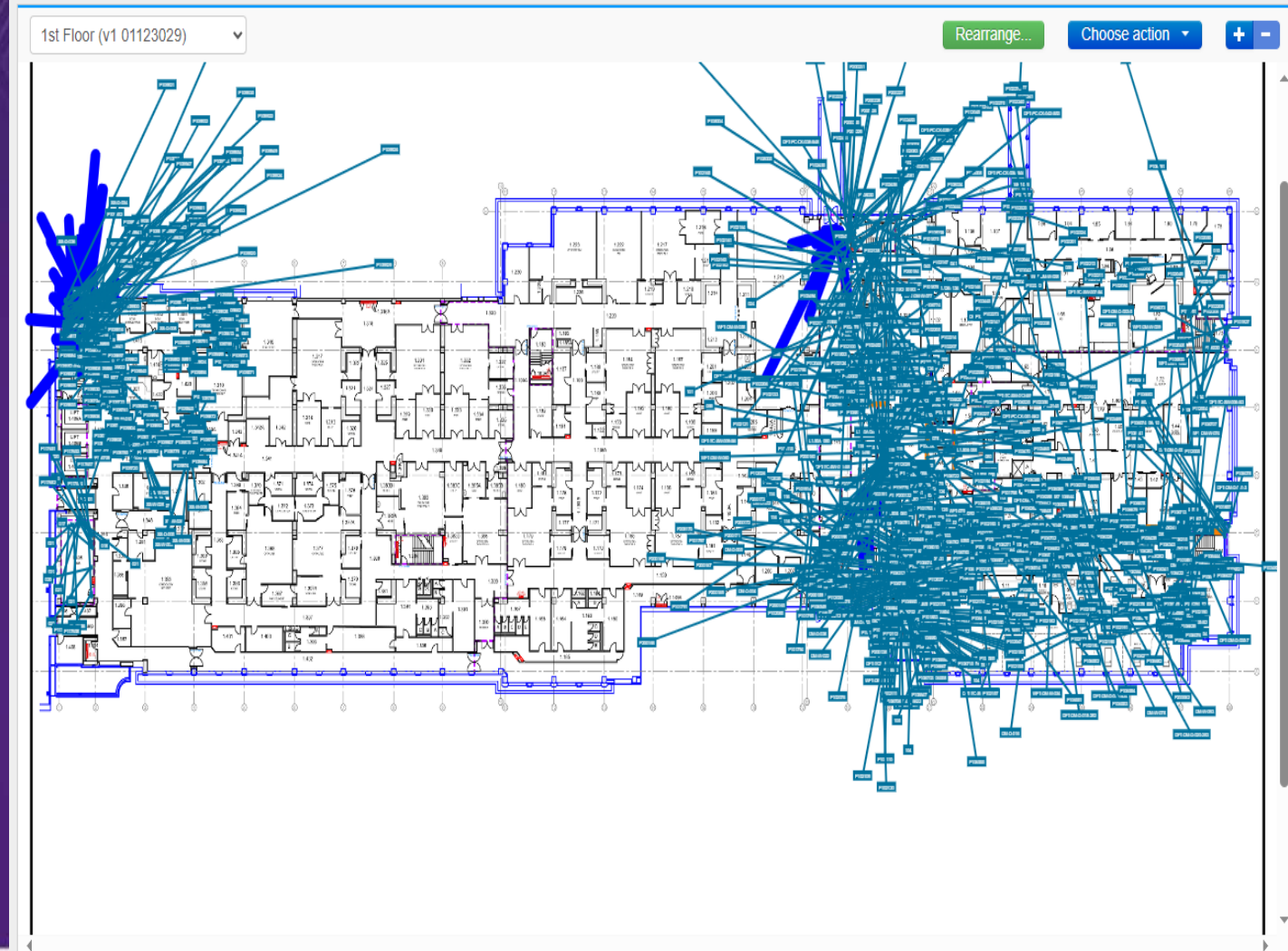
Technology: Quality Assurance



Software:

01 12 Parkside

Home > Drawing Sets > 01 12 Parkside > (All Data)



Technology: Tech Coatings FBL 100 Our Magic Paint



Pushing the boundaries
of the industry:



Hitting Site:

The Fun and Hard Stuff:

- Co-operation with Clinical and access.
- Mechanical Mayhem.
- Dilapidation.
- Doors, Doors, Doors.



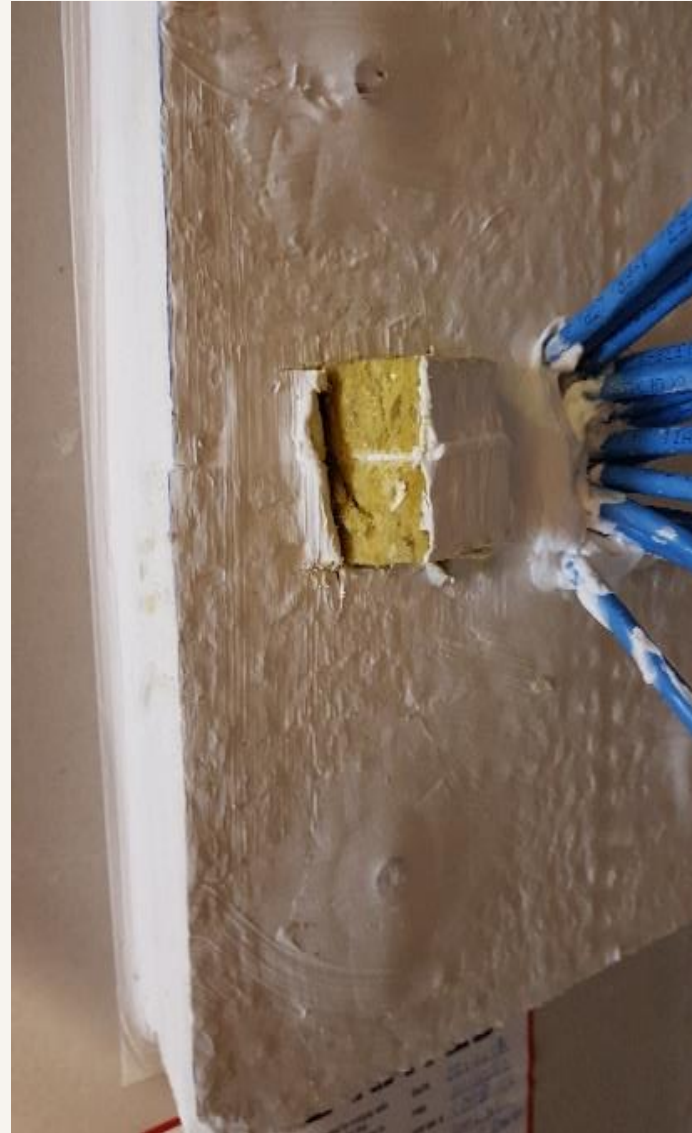
Construction Monitoring:

We are an Open Book:

Visual and Destructive Testing:

Access to the system and training for All:

- Fire Engineer
- CM Engineers
- Project Manager
- Quantity Surveyor
- BCA Inspectors
- Main Contractors
- Directors
- H&S



Compliance:

Achieving the Impossible:

- Achieved 2 Certificates of Acceptance under Covid.
- Established a NEW fully compliant Fire Door supply and Install route and installed over 150 doors to date.
- CoC for Parkside Stage 1 Due in September 2024.
- Completed over 30,000 Penetrations.
- Sprayed over 20,000 litres of FBL 100.
- Remediated over 15,000 msq of fire walls and 6000 msq of slab.

Future Plans:

What's left to do:

- Develop our guidance document to be the Standard for all Hospitals.
- Remain in Budget?
- Refine Skills and continue to develop new techniques and solution.
- Continue to change the industry for a safer New Zealand.



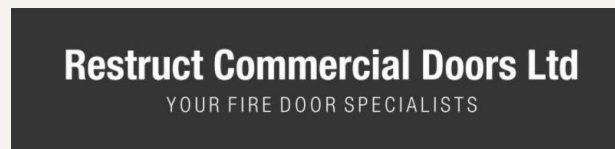
Legacy:

Providing for the Future:

- Detailed “As Built” Information.
- Accurate Materials records.
- Year on Year photographic history.
- Trackable updates and capacity information.
- Targeted Inspection programme for IQP.
- Certainty of BWOF and Compliance for Passive Fire and Doors.

Acknowledging the team:

One Big Team:





Thank You: